

Step 1 - Connect the Smartphone to the Wireless router
 You will need your Smartphone connected to your caravan's Wireless router and have the routers password. This router must be connected to the internet.

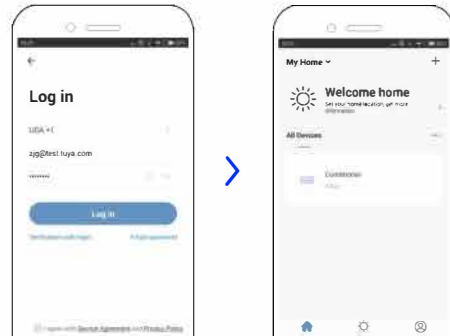
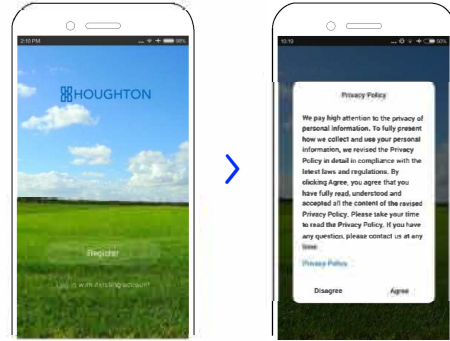
Step 2 - Down load the App

- Download the Houghton APP from Android Play Store or Apple Store by searching for "Houghton" or use QR code.



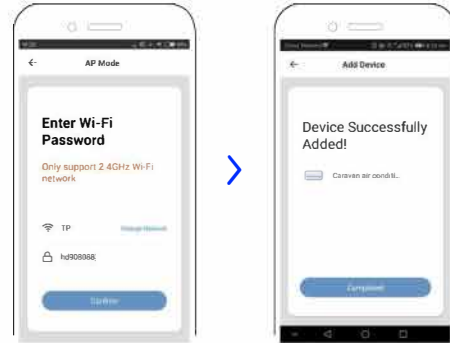
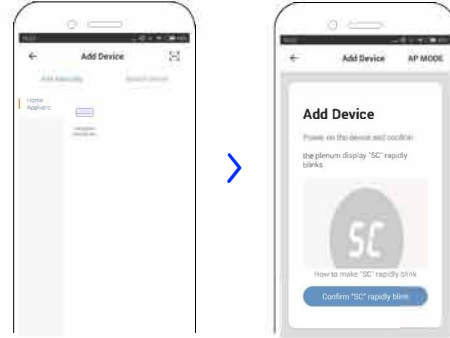
Step 3 - Register account (This step is only required when entering the APP for the first time)

- Start the Houghton APP.
- Follow the screen prompt to complete account registration, and finally enter the welcome page.



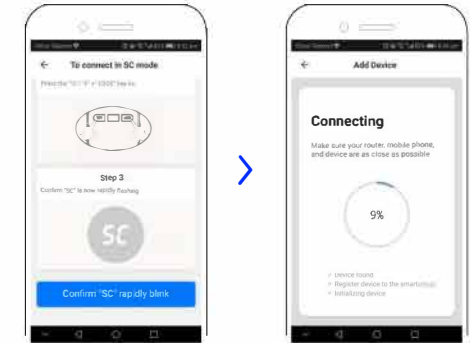
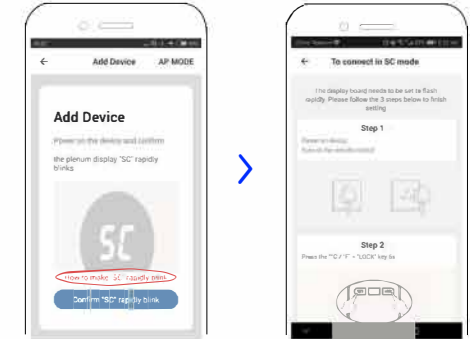
Step 4 - Connect the Air-conditioner to the Smartphone
 There are two connection modes for this step.
4.1 Fast connection mode(SC Mode)

- Select Add Device.
- Refer to 4.1.1 "How to enter SC mode".
- Select Confirm "SC" rapidly blink.
- Enter WiFi account and password.
- Successfully Added Device.
- After above operation you will now enter control page for the Airconditioner.



4.1.1 How to make "SC" rapidly blink

- Select How to enter the "SC" rapidly blink.
- Power on device. Turn on the remote control.
- Press and hold the "O/C/OFF" and the "LOCK" buttons simultaneously for 6 seconds.
- The display on the Air-conditioner will blink "SC".
- The unit is now ready to connect with the smart phone.



CARAVAN AIR-CONDITIONER

WiFi operation instruction

Interface introduction

- Make sure your smartphone or tablet has an operating system based on Android 4.1 or later and iOS 8.0 or later.
- WEP encrypted router connections are not supported.
- Please complete the WiFi configuration in 3 minutes. After 3 minutes, you need to reconfigure.
- With the upgrade and improvement of the product, the content of APP may be changed. Please follow the actual display and operation of APP.
- E&OE All values are approximate & subject to change.

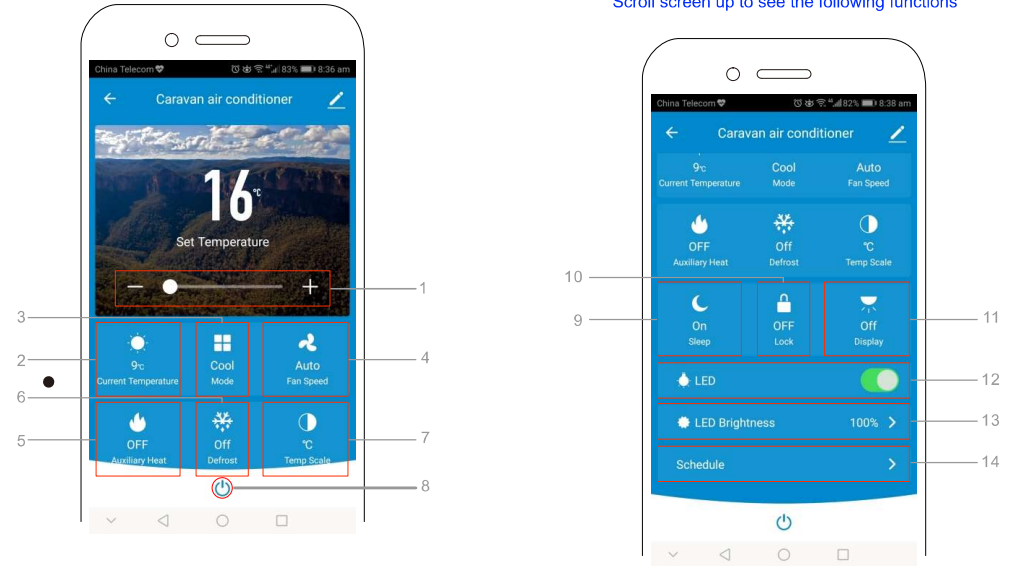
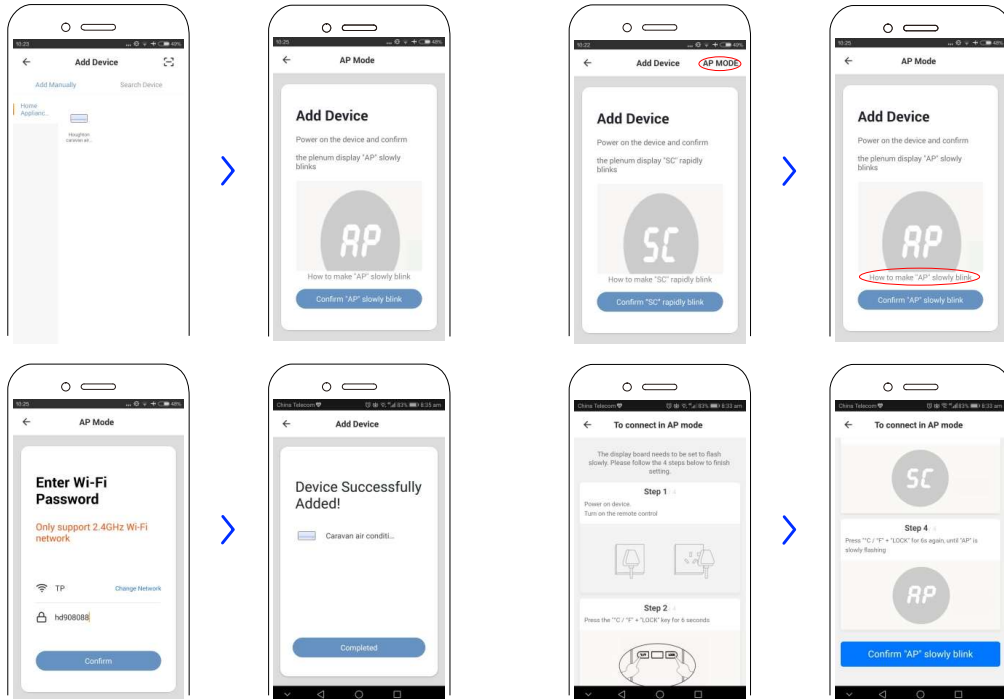
If fast mode connection(SC Mode) fails, select compatible mode(AP Mode) connection.

4.2 Compatibility mode (AP Mode)

- o Select Add Device.
- o Refer to 4.2.1 "How to enter AP mode".
- o Select Confirm "AP" slowly blink.
- o Enter WiFi account and password.
- o Successfully Added Device.
- o After above operation you will now enter control page for the Airconditioner.

4.2.1 How to make "AP" Slowly blink

- o Select AP Mode.
- o Select How to make "AP" slowly blink.
- o Power on device.Turn on the remote control.
- o Press and hold the "°C/°F" and the "LOCK" buttons simultaneously for 6 seconds.
- o The display on the Air-conditioner will blink "SC".
- o Press and hold the "°C/°F" and the "LOCK" buttons again simultaneously for 6 seconds.
- o The display on the Air-conditioner will blink "AP".
- o The unit is now ready to connect with the smart phone.



Scroll screen up to see the following functions

Item	Description
1	Set temperature display, move slider to set required temperature. Temperature range 16-30°C or 60-86°F. (The temperature slider can not be used, when the unit is off or in fan mode.)
2	Current Temperature Display
3	Mode button-Click to change COOL/FAN/DRY/HEAT/AUTO
4	Fan Speed button-Click to change Low/Medium/High/Auto
5	Auxiliary heat button-Valid only for units with auxiliary heat
6	Defrost cycle indicator-Shows when unit is defrosting
7	°C/°F option display button-Switch temperature scale between °C and °F
8	⏻-ON/OFF button,turn on/off unit

Item	Description
9	Sleep button-Only available in Cooling, Heating and Auto mode.
10	Lock button-Control plenum touch screen key ON/OFF
11	Display button-Control plenum display ON/OFF
12	LED-Turn LED lights ON/OFF(Valid only for units with LED lighting)
13	LED Brightness-Select 25% / 50% / 75% / 100% brightness
14	Schedule - Set ON & OFF timer schedules

If the unit with the WiFi module has not been configured, or the configuration information has changed, the display board will automatically display the SC after the air conditioning has been put on for the first time, indicating that it has entered the WiFi configuration state. If the WiFi configuration is not performed in 3 minutes, the SC disappears. The unit can work in accordance with the air-conditioning mode.